

# DHW PRODUCTION AND STORAGE TANKS

## ACCESSORIES

### LINING AND COVERS FOR EXTERNAL COVERING FOR OUR "MASTER"

Lining and covers for external covering for our "Master" series, comprising grey RAL 7042 padded lining, cover and trim sets for hydraulic connections in black. Supplied in separate packaging to be fitted in the tank after installation. M1 Class: Covering for indoor installation. M0 Class: "Fireproof" covering for indoor installation.

Capacities	M1 class lining	M0 class lining	Outdoor jacketing*
1500 l.	FME1500	FME1500/M0	FME1500/EX
2000 l.	FME2000	FME2000/M0	FME2000/EX
2500 l.	FME2500	FME2500/M0	FME2500/EX
3000 l.	FME3000	FME3000/M0	FME3000/EX
3500 l.	FME3500	FME3500/M0	FME3500/EX
4000 l.	FME4000	FME4000/M0	FME4000/EX
5000 l.	FME5000	FME5000/M0	FME5000/EX

\* For tanks without DN400 manhole.

### "LAPESA CORREX-UP" PERMANENT CATHODIC PROTECTION

"Lapesa-correx up" permanent cathode protection equipment, comprising a permanent titanium anode, potentiostat current regulator and connecting wires. All stainless and vitrified steel tank models may incorporate this cathode protection system. In stainless steel tanks this is a requirement for water with chloride concentrations >150 mg/l. Tanks up to 1000 L capacity fitted with this cathode protection system are supplied with the equipment fitted at the factory, as a "PC" version. "Lapesa-correx up" equipment for tanks from 1500 L onwards is supplied in separate packaging, to be fitted in the tank when it is installed (see table).



MASTER		GEISER	
KITPCTIMX2A	MXV1500RB...2500RB y MXV1500SB	8430352010525	GX-150/200-TS
KITPCTIMX3A	MXV3000...5000RB y MXV2000...25000SB	8430352010419	GX-150/200-TSM
KITPCTIMX4A	MXV3000...4000SB	8430352008263	GX-60-D/DEC/S
KITPCTIMX5A	MXV5000SB	8430352008270	GX-100-D/DEC/S
<b>CORAL VITRO</b>		8430352008287	GX-150-D/DEC/S
8430352607350	CV-200/300-R; CV-200/300-M1; CV-200/300-M1S; CV-300-M2	8430352008294	GX-200-D/DEC/S
8430352607367	CV-110/150-M1; CV-80/110/150-M1S	8430352008300	GX-300-D/DEC/S
8430352607381	CV-500-R; CV-500-M1; CV-400/500-M2	8430352008317	GX-500-D/DEC/S
8430352607374	CV-600/800/1000C; CV-600/800/1000P	8430352008324	GX-200-M1
8430352607053	CV-800-R; CV-800/1000-RB	8430352008331	GX-300/500-M1/M2
8430352607060	CV-1000-R; CV-800/1000-M1; CV-800M2	8430352008386	GX-800/1000-M1/M2
8430352607077	CV-1000-M2	8430352010112	GX-200-R
8430352608357	CV-400/500-HL	8430352008379	GX-300/500-R
8430352608739	CV-200/300-HL	8430352008362	GX-800/1000-R
8430352608746	CV-800/1000-HL	8430352011799	GX-800/1000-RB
8430352501061	CV-1500-R/RB	8430352010013	GX-600-P
8430352501078	CV-1500-M1/M1B/M2/M2B	8430352010433	GX-800-P
		8430352010440	GX-1000-P

### DN400 MANHOLE FLANGE FOR ELECTRIC HEATERS

#### DN400 FLANGE FOR DHW PRODUCTION

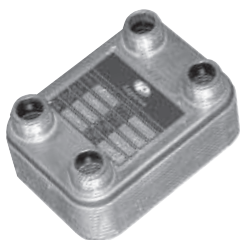
- Material: stainless steel.
- Compatible models: Coral RB, Geiser RB, Master RB.
- Electric immersion heaters\* Available: 6 kW, 9 kW, 12 kW, 15kW\*\*, 25 kW\*\*

#### DN400 FLANGE FOR PRIMARY ENERGY PRODUCTION

- Carbon steel.
- Compatible with IB models (inertia with manhole).

\* To be confirmed for each capacity tank.  
\*\* With or without thermostat.

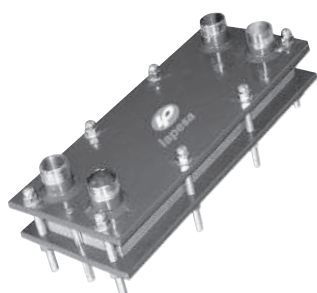
## PLATE HEAT EXCHANGERS



COMPACT HEAT EXCHANGERS		REFERENCE	(kW)	MAXIMUM POWER PRIMARY(Kcal/h)	FLOW AT 50°C (l/h)	PRESSURE DROP
Maximum working temperature	135 / 155°C <sup>(1)</sup>	LPIC-01	46,5	40.000	1000	<3
Maximum working pressure	16 / 25 bar <sup>(2)</sup>	LPIC-02	93,0	80.000	2000	<3
Applications	liquid / liquid	LPIC-03	139,5	120.000	3000	<3
	vapour / liquid	LPIC-04	186,0	160.000	4000	<3
	gas / liquid	LPIC-05	232,5	200.000	5000	<3
Frame	AISI 316	LPIC-07	325,5	280.000	7000	<8
Plates	AISI 316	LPIC-10	465,0	400.000	10000	<8
Connections	AISI 316	LPIC-12	558,0	480.000	12000	<8
Gaskets	non applicable					

<sup>(1)</sup> Maximum working temperature for LPIC-01 and LPIC-02 is 135°C, 155°C for the rest.

<sup>(2)</sup> Maximum working pressure for LPIC-01 to LPIC-05 is 126 bar for the rest, 25 bar.



DETACHABLE PLATE HEAT EXCHANGER		REFERENCE	(kW)	MAXIMUM POWER PRIMARY(Kcal/h)	FLOW AT 50°C (l/h)	PRESSURE DROP
Maximum working temperature	1100°C with nbr joints <sup>(3)</sup>	LPID-01	46,5	40.000	1000	<3
Maximum working pressure	10 bar with standard frame <sup>3)</sup>	LPID-02	93,0	80.000	2000	<3
Applications	liquid / liquid	LPID-03	139,5	120.000	3000	<3
	vapour / liquid <sup>(4)</sup>	LPID-04	186,0	160.000	4000	<3
Frame	Carbon steel <sup>(3)</sup>	LPID-05	232,5	200.000	5000	<3
Plates	AISI 316(3)	LPID-07	325,5	280.000	7000	<8
Connections	AISI 304(3)	LPID-10	465,0	400.000	10000	<8
Jgaskets	NBR(3)	LPID-12	558,0	480.000	12000	<8

<sup>(3)</sup> Other options of material temperatures or pressure available.

<sup>(4)</sup> For vapour usage please consult for type of gaskets to be used.

### OUR REQUIREMENTS TO PROVIDE AN OFFER FOR A PLATE HEAT EXCHANGER "MADE TO MEASURE"

- Flow at primary and secondary circuits.
- Primary and secondary temperatures.
- Physic properties of the liquids or gases, density and specific heat.
- Working pressure desired.
- Maximum pressure drop admissible.

## CONTROL PANELS



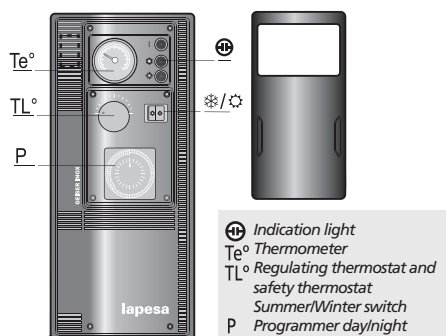
**ST CONTROL PANEL\* (Geiser Inox) / TS\* (Coral vitro)** Adapted for installations where the panel controls de DHW production.

**K CONTROL PANEL\* (Geiser Inox) / TD\* (Coral vitro)** For installations where the panel controls the production of dhw through the primary circuit or the electric immersion heater ( summer/winter switch).

**BC CONTROL PANEL\*** Adapted.

**KP1\* CONTROL PANEL Geiser Inox / TPA\* Coral Vitro** For installations where the control panel controls the production of DHW through the primary circuit or the electric immersion heater through the analogic timer.

\* For any installation above 2,5KW and according to UNE6094 the control of the immersion heater must be carried out through an external contactor.



Model	Thermo- meter	Regulating Thermostat	Safety thermostat	Switch	Programmer day/night	Indication light
<b>S</b> (GEISER INOX)	0					
<b>T</b> (CORAL VITRO)	0					
<b>ST</b> (GEISER INOX)	0	0				
<b>TS</b> (CORAL VITRO)	0	0				
<b>K</b> (GEISER INOX)	0	0	0	0		
<b>TD</b> (CORAL VITRO)	0	0	0	0		0
<b>BC</b>	0	0	0	0		0
<b>KP1</b> (GEISER INOX)	0	0	0	0	0	0
<b>TPA</b> (CORAL VITRO)	0	0	0	0	0	0

Code	Compatibility
PANEL K	GEISER INOX (GX) – models D / DEC / M1 / M2 / R / RB / P / PAC
PANEL TD	CORAL VITRO (CV) – models M1 / M2 / R / RB / P / HL
PANEL BC	Compatible models panels K and TD
PANEL KP1	GEISER INOX (GX) – models D / DEC / M1 / M2 / R / RB / P / PAC
PANEL TPA	CORAL VITRO (CV) – models M1 / M2 / R / RB / P / HL