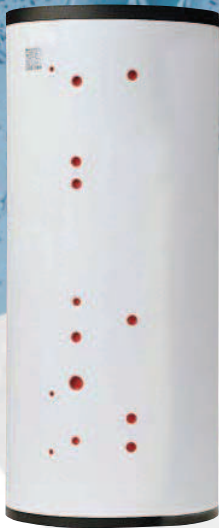


DHW PRODUCTION AND STORAGE TANKS

GEISER INERTIA, STRATIFICATOR



800 to 1500 litres

ENERGY STORAGE CENTER. Stratificator buffer tank for closed circuit with 800, 1000 and 1500 litres capacities.

OPTIMUM STRATIFICATION of temperature thanks to its three independent collectors and one heating chamber.

HIGH PERFORMANCE INSULATION GUARANTEED. Rigid polyurethane foam CFC free 0.025 w/m °k (for example a G800SLS losses 0.15°C/h).

MULTIFUNCTIONAL. Ideal for usage with multiple heating sources as for example solar and boiler).

PASS THROUGH 800mm WIDE DOORS. The 800 and 1000 litre models pass through 800 mm doors wide thanks to the part/removable thermal insulation.

Technical characteristics		
Température max.	°C	100
Pression max.	bar	3



Buffer tanks especially designed to work as a buffer in closed circuits for **HEAT PUMPS, SOLAR PANELS**, all kind of boilers (pellets, wood, solid fuels...)

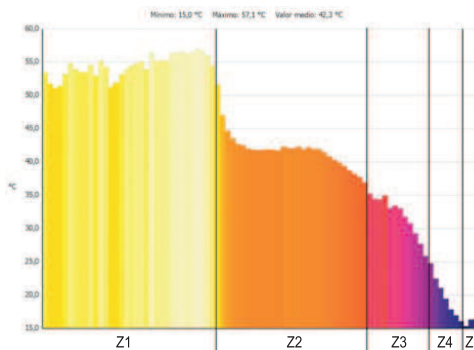
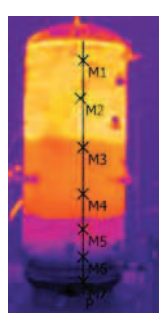
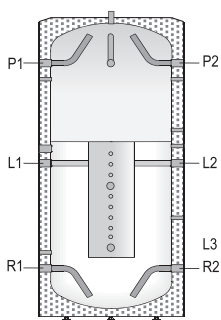


BUFFER VESSEL FOR CLOSED CIRCUITS "G series"

- Carbon steel tank for closed circuit : 800, 1000 and 1500 litres.
- Rigid polyurethane foam CFC free 0.025 w/m °k.
- RAL7042 grey jacket factory mounted for 800 and 1000 litres. Supplied loose for the 1500 litres.
- Passes through 800 mm wide doors thanks to its pre-cutted insulation.

COMPARATIVE TESTS

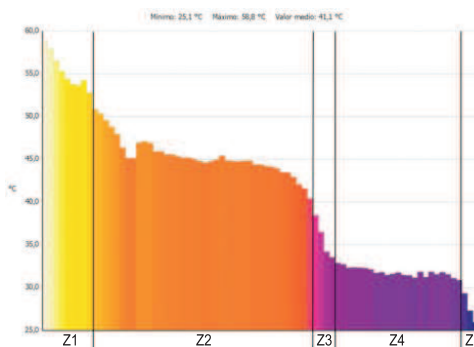
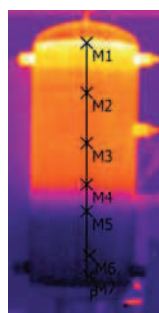
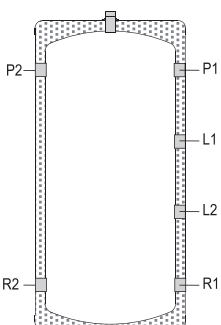
- Comparative thermal images between a Standar Inertia tank and a SLS Inertia tank.



N°	Temp. (°C)	%
Z1	60,0	39
Z2	45,0	33
Z3	35,0	15
Z4	25,0	7
Z5	20,0	6

- Water stored at 58°C
- Incoming water at L2: 15 °C
- Water output at R1: 15 °C
- Continuous flow for the test: 500 l/h
- Water volume used for the test: 140 l.

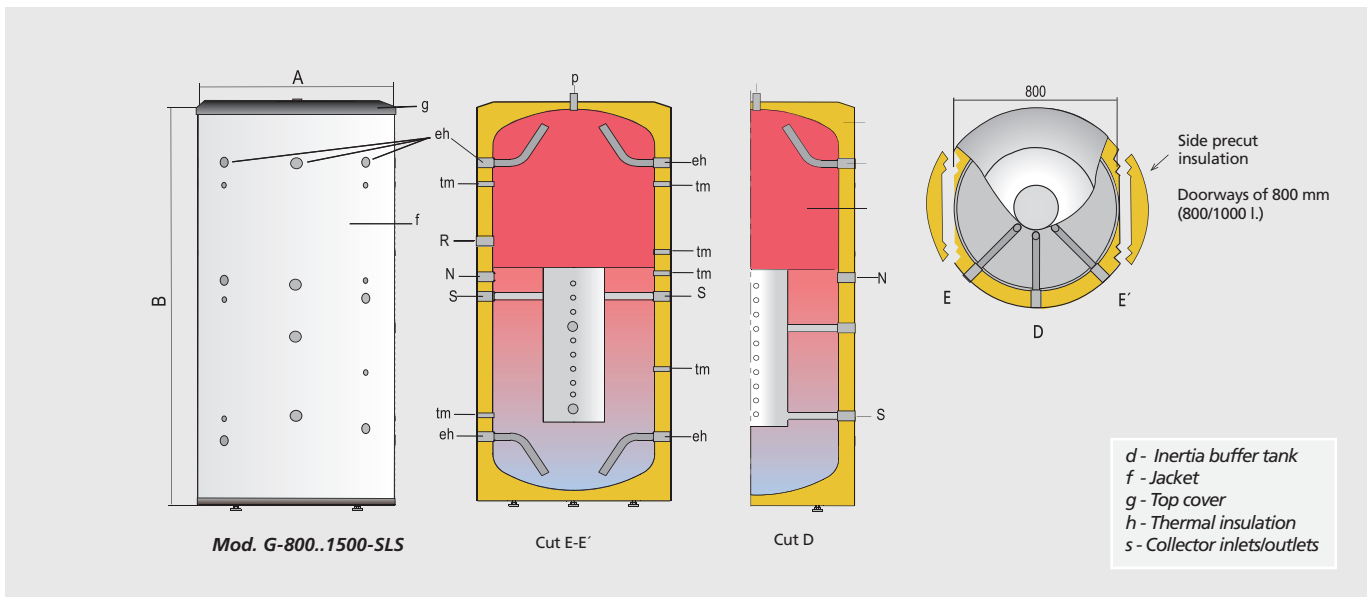
SLS inertia model **WITH** thermal stratification included.



N°	Temp. (°C)	%
Z1	60,0	11
Z2	45,0	50
Z3	35,0	6
Z4	25,0	28
Z5	20,0	6

- Water stored at 58°C
- Incoming water at L2: 15 °C
- Water output at R1: 15 °C
- Continuous flow for the test: 500 l/h
- Water volume used for the test: 140 l.

Inertia model **WITHOUT** thermal stratification included.



Characteristics / Connections / Dimensions		G-800-SLS	G-1000-SLS	G-1500-SLS
Capacity	l.	800	1000	1500
Maximum temperature	°C	100	100	100
Maximum pressure	MPa (bar)	0.3 (3)	0.3 (3)	0.3 (3)
Empty weight	kg	175	200	260
eh: Side connection / diffusers	"GAS/H	2	2	2
p: Purge connection	"GAS/H	3/4	3/4	3/4
tm: Sensor connections	"GAS/H	1/2	1/2	1/2
N: Side connections	"GAS/F	1/2	1/2	1/2
S: Collector connections	"GAS/F	1/2	1/2	1/2
R: Electric immersion heater	"GAS/F	2	2	2
Cote A: External diameter	mm	950	950	1160
Cote B: Total height	mm	1840	2250	2300

HIDRAULIC INSTALLATION EXAMPLE

Energy buffer center installed with DHW calorifier and multiples sources.

